

A technician wearing glasses and a dark blue shirt is working on a large, complex mechanical component, likely a helicopter engine or transmission. The component is mounted on a yellow hydraulic lift. The technician is looking up at the component with a focused expression. The background is a dark, industrial setting with various parts and equipment visible.

Airbus Helicopters Canada

MAINTENANCE REPAIR & OVERHAUL SERVICES



All rights reserved, Airbus Helicopters' logo and names of its products and services are registered trademarks (2015).

Airbus Helicopters Canada
1100 Gilmore Road
P.O. Box 250
Fort Erie, ON L2A 5M9 Canada

Email: AHCA-Marketing@airbus.com
Telephone: 905 871-7772
Fax: 905 871-3599
Website: www.airbushelicopters.ca

Airbus Helicopters reserves the right to make configuration and data changes at any time without notice. The facts and figures contained in this document and expressed in good faith do not constitute any offer or contract with Airbus Helicopters.



Table of Contents

Dynamic Components	3
Overview of Airbus Helicopters Canada Support & Services	4
Dynamic Components Repair and Overhaul	6
Dynamic Components Repair - EC120	7
Dynamic Components Repair - AS350 / AS355 / EC130	8
Dynamic Components & Hydraulic Repair - BO105 / BK117	14
Repair and Overhaul Capabilities	16
Blade Exchange & Repair Program	19
Exchange Programs	20
Repair Programs	21
Service Centre	23
Range of Services	25
Contact Information	27

Contact Information

Director of Aftermarket Sales Gordon Kay Tel: (905) 994-2910 gordon.kay@airbus.com	Director of Support and Services Benoit Marcoux Tel: (905) 994-2912 benoit.marcoux@airbus.com
Manager, Commercial Office Amanda Bondar Tel: (905) 994-2974 amanda.bondar@airbus.com	Spare Parts Support Manager Bill Reid Tel: (604) 244-1669 bill.reid@airbus.com
Customer Service Representative Allan Shewan Tel: (905) 994-2914 allan.shewan@airbus.com	Customer Service Representative Dan Payette Tel: (514) 334-5554 ext.5003 dan.payette@airbus.com
Customer Service Representative Max Dobbie Tel: (905) 994-2954 max.dobbie@airbus.com	Customer Service Representative Ruby Smith Tel: (905) 994-2930 ruby.smith@airbus.com
Customer Service Representative Tracey Lahaie Tel: (905) 994-2957 tracey.lahaie@airbus.com	Customer Service Representative James Taylor Tel: (604) 244-1669 james.taylor@airbus.com

**DYNAMIC
COMPONENTS:
REPAIR &
OVERHAUL AND
MACHINING**





Airbus Helicopters Canada prides itself on its comprehensive support and services solutions. In addition to being certified for overhauls of dynamic components, Airbus Helicopters Canada also has the capabilities to perform repairs and machining in-house.

This integrated approach to repairs and overhauls is the result of Airbus Helicopters Canada's commitment to quality, efficiency, and customer service.

The result - customer savings in time and money.

Range of Services

AS350

- Aircraft Conversions AS350 B to BA, AS350 BA to B2
- Aircraft rebuilding and refurbishing
- Airframe field repairs
- Hard landing inspection and repair
- Composite repair

AS350 / H120 / H130

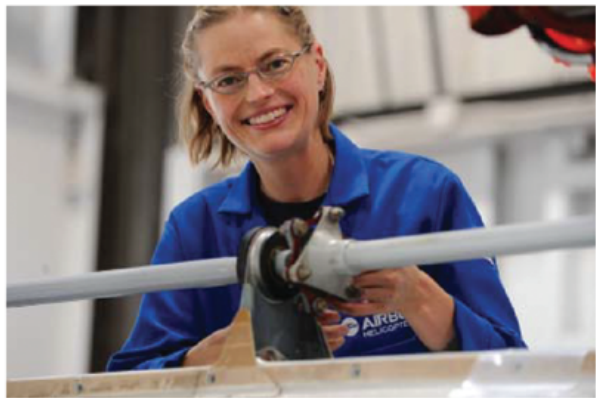
- Maintenance
- T and 12-year major inspections
- Optional equipment installation

Benefits of using Airbus Helicopters Canada Service Centre include:

- Access to technical specialists and engineering staff fully dedicated to Airbus Helicopter products in Canada.
- Support of Airbus Helicopter network in terms of design office, technical services and inspections.
- Dedicated team with decades of experience, whose primary focus is major inspections, rebuilds and conversions.
- Factory approved onsite main rotor and tail rotor blade repairs and dynamic components.



Service Centre



The Airbus Helicopters Canada Service Centre in Fort Erie, Ontario is able to provide comprehensive maintenance, repair and overhaul services such as:

- Light maintenance, troubleshooting and periodical inspections, up to major inspections
- Post server incident inspections
- External aircraft painting and interior refurbishment
- Modifications, customizations, aircraft retrofit, upgrades, and refurbishment

The facility offers complete turnkey aircraft maintenance services. Our fully qualified, factory-trained personnel are experts in maintaining the full family of Airbus Helicopters including those made by its predecessors Eurocopter, Aerospatiale and MBB.

Airbus Helicopters Canada is an AS 9100 registered company. Our Service Centre meets all the requirements for Transport Canada CAR Subpart 573, European EASA Part 145 and FAA FAR Part 145 acceptance. Other capabilities include sheet metal repair, avionics customization and composite part manufacturing and repair.

All Airbus Helicopters Canada maintenance personnel are either Transport Canada licensed Aircraft Maintenance Engineers (AME), qualified by Airbus Helicopters Canada or graduates of an accredited college AME program.

Our Service Centre capabilities also include avionics repairs, complete system upgrades, pilot static system certification, transponder integration/correlation checks, modifications and the ability to perform inspections for the AS350, AS355, H120, H130, EC135, BO105 and BK117.

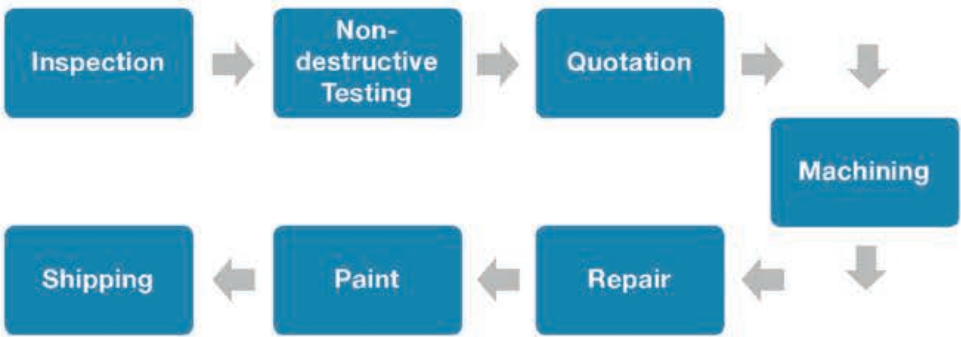
Dynamic Component Repair & Overhaul

One - Stop - Shop

Airbus Helicopters Canada's level I-IV Repair and Overhaul (R&O) Department is certified for component repair and overhaul for the EC120, EC130, AS350, AS355, BO105 and BK117 as well as, repair of hydraulic packs for the BO105 and BK117.

All Airbus Helicopters Canada R&O department personnel are trained and certified to the highest standards by Airbus Helicopters. Airbus Helicopters Canada's Repair & Overhaul shop is equipped with:

- Dynamic transmission run-in stands and test benches - EC120, EC130, AS350, AS355
- Hydraulic stand for BK117 and BO105 hydraulic modules.
- Airbus Helicopters special tools
- Fully equipped machine shop



As part of Airbus Helicopters Canada's repair and overhaul processes, repairs and machining on a wide range of parts and sub-assemblies are performed in-house—saving customers time and money.

**Repairs available with dual certification (EASA, TCCA & FAA)



Dynamic Component Machining Capabilities

Model
Part
Part#
Repair

ECH120
Upper Housing
C632A1111-XXX
Bore and bush



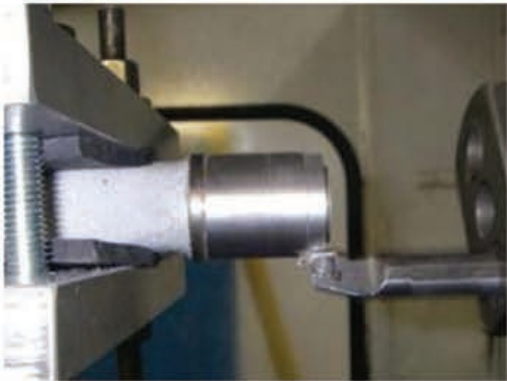
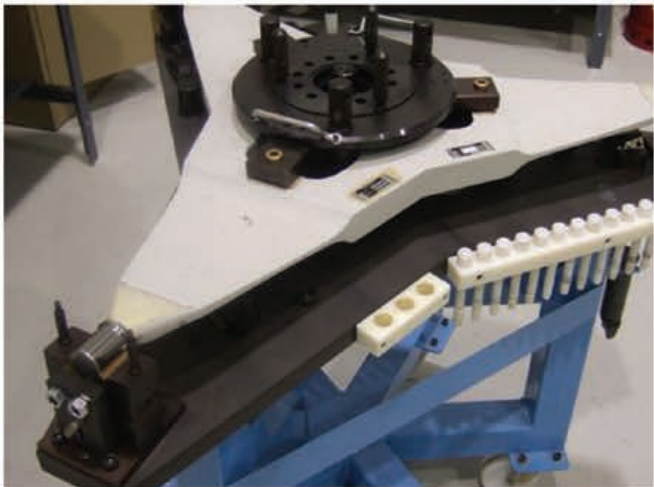
Model
Part
Part#
Repair

ECH120
Upper Housing
C632A2116-XXX
Corrosion in holes

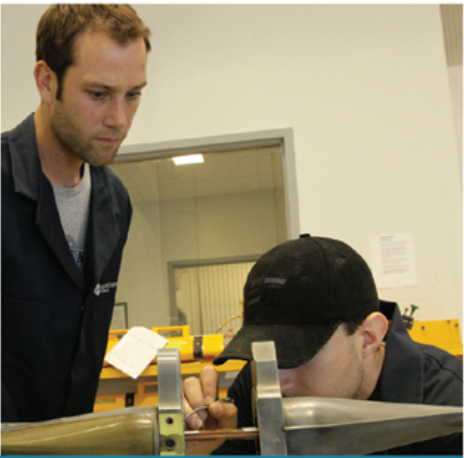


Dynamic Component Machining Capabilities

Model	AS350 / AS355 / H130
Part	Starflex Bushing
Part#	350A31-1917-XX & 350A31-1918-00
Repair	Removal of worn-out bushings Installation of new bushings Certification



Repair Programs



Airbus Helicopters Canada offers a wide range of repair solutions for blades. By selecting Airbus Helicopters' OEM repair services, operators benefit from extensive development, training, support and globally recognized workmanship.

AS350 / AS355 MAIN ROTOR BLADE

- Inspection after incident
- Inspection, refinish paint, and static balance (includes root tape)
- Inspection, paint touch-up, and static balance
- Replacement of outboarding leading edge
- Replacement of polyurethane lower surface
- Repair of skin reparation by resin injection

AS350 / AS355 TAIL ROTOR BLADE

- Inspection after incident
- Inspection, spar inspection, refinish and static balance
- Inspection, spar inspection, paint touch-up, static balance
- Replacement of stainless steel strip, bond strap

H120 MAIN ROTOR BLADE

- Inspection, refinish paint, and static balance
- Replacement of #1 leading edge
- Replacement of #2 leading edge
- Replacement of #3 leading edge
- Replacement of #4 leading edge

**Blade/component repairs available with dual certification (TCCA & EASA).

Personalized Repair Services
Airbus Helicopters Workmanship
Maximum availability

Exchange Programs

Return damaged blades to Airbus Helicopters Canada and take advantage of one of our beneficial exchange programs

Airbus Helicopters Canada's exchange programs offer personalized solutions that are both practical and cost-efficient while ensuring maximum flying time.



STANDARD EXCHANGE

- P/N 355A11-0020-00 to 11
- P/N 355A11-0030-00 to 04
- P/N C621A1-0061-01 to 03
- P/N 350A11-0010-00 to 07
- P/N 355A12-0040-08 to 14
- P/N 355A12-0050-04 to 12

UPGRADE EXCHANGE SETS

- Upgrade of any repairable P/N 350A11-0010 to 355A11-0030-04
- Upgrade of any repairable P/N 355A11-0020 to 355A11-0030-04

ZERO TAT EXCHANGE

- Immediate delivery (upon blade availability)
- Price are determined based on core and exchanged blades
- Please send log cards of your blades for an offer

- Notes:
- Standard Conditions of Services apply to the R&O Standard Exchange and Rentals.
 - Additional conditions may apply, see your Airbus Helicopters Representative for more details.
 - Lead time to be confirmed at time of order. Standard Exchange not offered as AOG or RUSH level of service.
 - Blades repaired outside of the Airbus network not eligible
 - Blades involved in incident/accident not eligible for exchange

Dynamic Component
Machining Capabilities

Model	AS350 / AS355 / H130
Part	Star, non-rotating
Part#	350A37-1002-XX
Repair	- Worn mounting ears / stirrups - Bore and bush



Dynamic Component Machining Capabilities

Model	AS350 / AS355 / H130
Part	Main Case
Part#	350A32-3121-XX
Repair	<ul style="list-style-type: none">- Corroded flanges / holes- Bore & sleeve (72 mm) pinion bearing bore- Bore & sleeve (126 mm) input housing bore- Input Flange housing corrosion



BLADE EXCHANGE & REPAIR PROGRAM



Dynamic Component Machining Capabilities

Model AS350 / AS355 / H130
Part Lower Case
Part# 350A32-3119-XX
Repair - Worn/undersize bearing mounting diameter
- Bi-directional faces
- Flanges / holes



Model AS350 / AS355 / EC130
Part Main Mast (Timken or 4 Contact)
Part# 350A37-1076-XX / 350A37-1290-XX
Repair - Worn/undersize bearing sleeve
- Worn bushings (12 apostels)
- Chamber wear (1076)

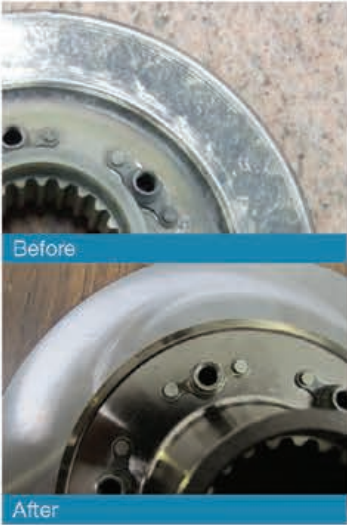


Dynamic Component Machining Capabilities

Model AS350
Part Transmission Cross Beam
Part# 350A38-1018-XX, 350A38-1040-20
Repair Bore and bush



Model AS350 / AS355 / H130
Part Brake Disc
Part# 350A32-3088-20
Repair Wear on surface



Repair & Overhaul Capabilities

AS355

Bevel Reduction Gearbox	355A32-0600-xx & 355A32-0601-00
Oil Pump	355A32-0700-02 & 355A32-0701-00
Combiner Gearbox	355A32-0200-XX
	355A32-0210-XX & 355A32-0211-00
Tail Rotor Gearbox	350A33-0200-04/-05-07 &
	350A33-0210-00
Epicyclic	350A32-0110-00(4contact) &
	350A32-0120-00
	350A32-0100-10(Timkin)
Pitch Change Spider	350A33-2030-00

BK117

Intermediate GB	4639002XXX
Tail Rotor GB	4639003XXX

BO105

Intermediate GB	4619002XXX
Tail Rotor GB	4619003XXX
Main Transmission	4638001XXX

Airbus Helicopters Canada also performs repairs and overhauls on a number of components not listed above. Some of these include: Shaft, Swashplate Guide, T/Rotor Drive Shaft (long/short), Starflex, Non-rotating Star, Crossbeam, Instruments, Shock Absorber, Anit-Vibe Support, Rotating Star, Input Housing, Fuel Probes, and Servos. Please contact your CSR for more information.

Repair & Overhaul Capabilities

Airbus Helicopters Canada is certified for the repair and overhaul of all dynamic components and mechanical assemblies for the EC120, AS350/355, EC130, BO105, BK117 as well as an exchange pool for hydraulic servos for EC120, AS350/355 and an exchange/rental pool for all dynamic components. The following is a list of the main components.

Component	Part Number
AS350 / H130	
Bevel Reduction Gearbox	350A32-0300-04/-05 350A32-0350-xx (EC130) 350A32-0400-00 350A32-0500-02 350A33-0200-05/-06 & 07 350A33-0210-00 (B3e) 350A33-0501-xx (EC130) 350A33-0502-xx
Oil Pump	350A32-0110-00 (4 Contact)
Rotor Brake	350A32-0100-10 (Timkin)
Tail Rotor Gearbox	350A32-0120-00 (EC130) 355A37-0000 355A37-0005-06 350A37-0003-xx (Timkin) 350A37-0004-xx (4 contact) 350A33-2030-00 350A33-2150-01 350A37-1127-01/-02 350A37-1126-01/-02 350A33-2145-01
Epicyclic	
Mast Assembly	
Pitch Change Spider	
Ball End	
Scissor Link	
Pitch Link	
H120	
Epicyclic	C632A0101-xxx
Main Gearbox	C632A0201-xxx
Tail Rotor Gearbox	C652A0101-xxx
Scissor Link	C632A2006-103
BK117 & BO105	
Hydraulic Units	BK117-45020V-xxx & BOCB-105-45028V-xxx B0105-450121

Dynamic Component Machining Capabilities

Model	AS355
Part	Combining Gearbox
Part#	355A0210-XX / 355A0200-XX
Repair	- Corrosion - Worn / oversized bearing bores



Model	BO105
Part	Transmission Top Case
Part#	4638-201-XXXX
Repair	Corroded mouting holes

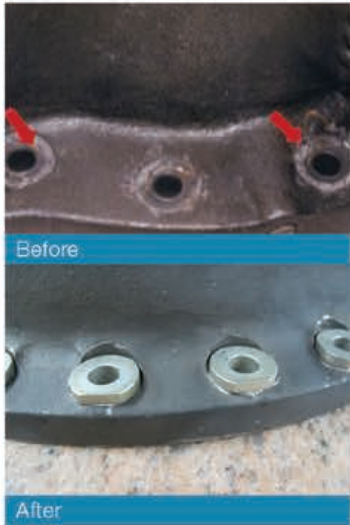


Model	BO105
Part	Mast
Part#	4619-305-XXXX
Repair	- Corrosion on mounting face - Replacement of mast momments / bridge



Dynamic Component Machining Capabilities

Model BO105
Part Transmission Center Case
Part# 4638-201-0030
Repair - Tail rotor bore; fan bore; axillary bore
- Seal seat
- Corroded mounting holes and flanges surface



Model BO105 / BK117
Part Lower Housing
Part# 4638-201-0030
Repair - Corroded flange surface
- Bolt holes



Dynamic Component Machining Capabilities

Model BO105
Part Transmission Gearbox Housing
Part# 4619-310-XXX
Repair - Corroded chamfer surfaces
- Corroded bore surfaces
- Mounting lugs



Model BO105 / BK117
Part Tail Rotor Gearbox Assembly
Part# 4639-310-XXX
Repair - Oversize bolt holes
- Removal of corrosion and bush
- Bore surface

